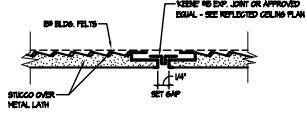
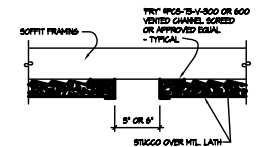


LEGEND	
	CEILING VENT 2 LAYERS OF 5/8" TYPE X GYP. BOARD
	SOFFIT - STUCCO ON METAL LATH + BIT FELT
	SOFFIT - STUCCO ON METAL LATH + 2 LAYERS OF 5/8" TYPE X WATER RESISTIVE GYP. BOARD

TABLE 2.1.1 - CEMENT PLASTER						
Joint	Minimum Thickness	Maximum Thickness	Minimum Reinforcement	Maximum Reinforcement	Minimum Density	Maximum Density
Interior	5/8"	1 1/2"	1/2" galvanized wire mesh	1/2" galvanized wire mesh	110	130
Exterior	5/8"	1 1/2"	1/2" galvanized wire mesh	1/2" galvanized wire mesh	110	130
Overlaid	5/8"	1 1/2"	1/2" galvanized wire mesh	1/2" galvanized wire mesh	110	130



1 STUCCO EXP. JOINTS



2 SOFFIT VENT

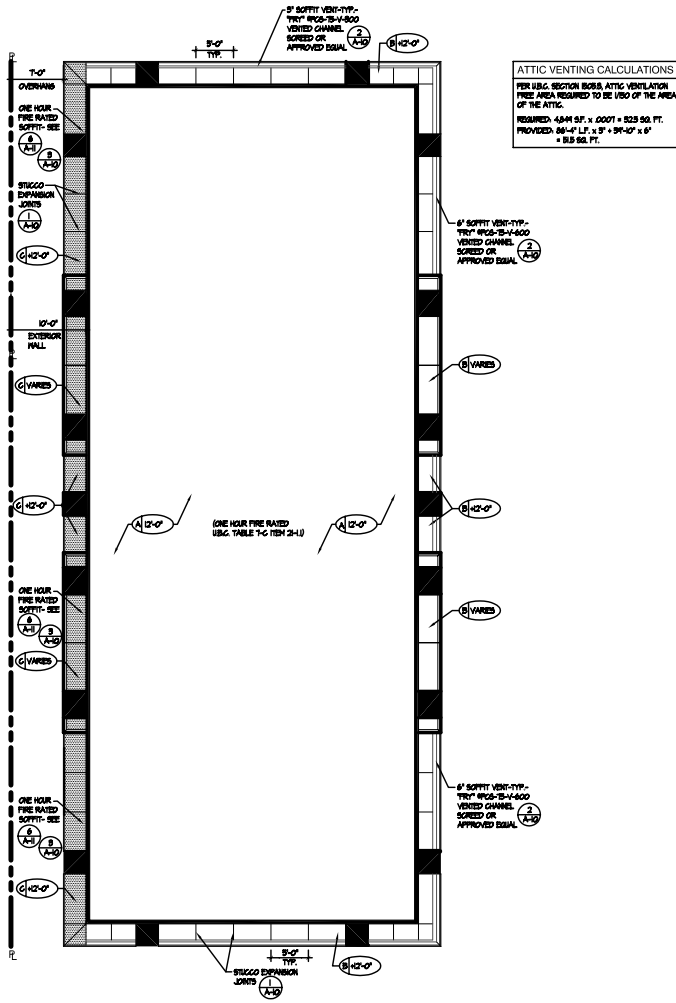
ROOF/CEILING ASSEMBLY

Number of Assembly	ASSEMBLY	MINIMUM PROTECTION FOR FLOOR AND/OR EXTERIOR	MINIMUM PROTECTION FOR CEILING
1	1/2\"/>		

EXTERIOR WALL ASSEMBLY - I.B.C. 2003 EDITION, TABLE 720.1 (2)

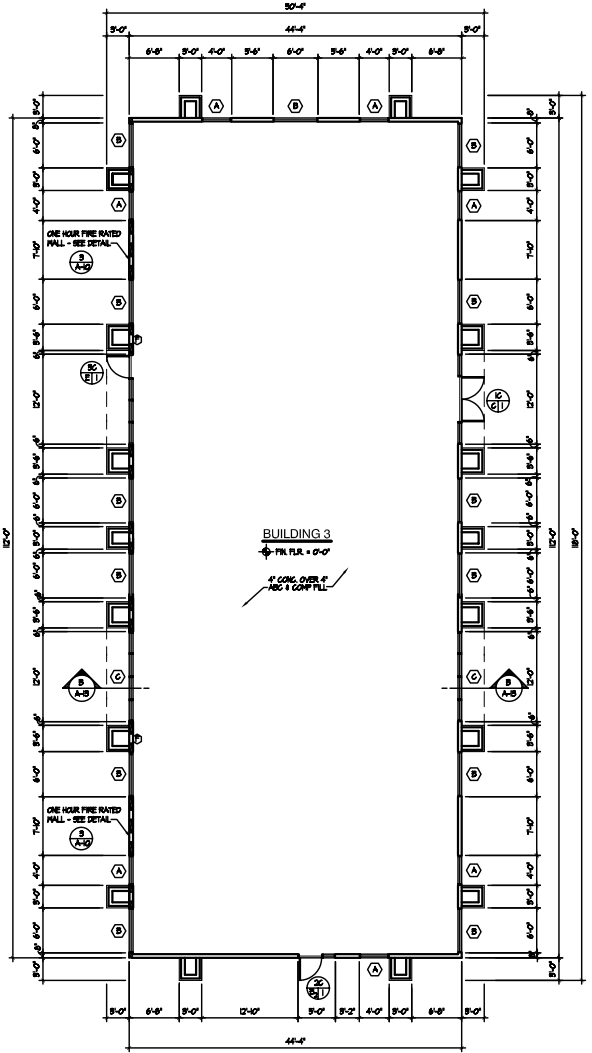
1/2\"/>

3 ONE HOUR FIRE RATED EXTERIOR WALL/ROOF/CEILING ASSEMBLY



ATTIC VENTING CALCULATIONS
PER I.B.C. SECTION 603.8, ATTIC VENTILATION FREE AREA REQUIRED TO BE 1/300 OF THE AREA OF THE ATTIC.
REQUIRED: 4844 SF. x .0001 = 503.56 SF.
PROVIDED: 2847 LF. x 18\"/>

4 REFLECTED CEILING PLAN BUILDING 3



FLOOR PLAN BUILDING 3 - 5000 SQ. FT.

- NOTES:
- 1 - TYPICAL EXTERIOR WALLS - STUCCO OVER MIL LATH, BIT FELT, GIB BOARD & 2\"/>
 - 2 - TYPICAL EXTERIOR PLASTER - NATURAL STONE VENEER OVER BIT FELT, GIB. BO. & 3/4\"/>
 - 3 - INSULATE ATTIC W/ R-50 BATT INSULATION - HIRE HANG
 - 4 - (E) INDICATED FIRE EXTINGUISHER - 2A, 10LB BRACKET MTD. - SEE PLAN FOR LOCATIONS

A NEW COMPLEX FOR
COTTONWOOD LANE PROFESSIONAL OFFICES
421 EAST COTTONWOOD LANE, CASA GRANDE, AZ 85222

1356 E. MARSHALLS RD., SUITE 101
MESA, ARIZONA 85203 • (480) 964-4451
Inc.

ASSOCIATED ARCHITECTS
Architecture - Construction Management - Planning



DATE	BY	DESCRIPTION

--

SHEET NO. 13
A-10
OF 31

COPYRIGHT © THESE DRAWINGS ARE THE PROPERTY OF ASSOCIATED ARCHITECTS, P.C. AND MAY NOT BE REPRODUCED OR TRANSMITTED IN ANY FORM OR BY ANY MEANS WITHOUT THE EXPRESS WRITTEN PERMISSION OF THE ARCHITECT. CONTRACTOR SHALL VERIFY ALL DIMENSIONS BEFORE PROCEEDING WITH THIS WORK.